

**MADE IN ITALY  
SINCE 1920**

**Rinieri**



**INTERCEPPI - OFFSET MACHINERIES - MAQUINARIAS INTERCEPAS  
EQUIPEMENT INTERCEPS - STOCKRAUMGERATE**





**VELOX  
[www.rinieri.com](http://www.rinieri.com)**


# VELOX

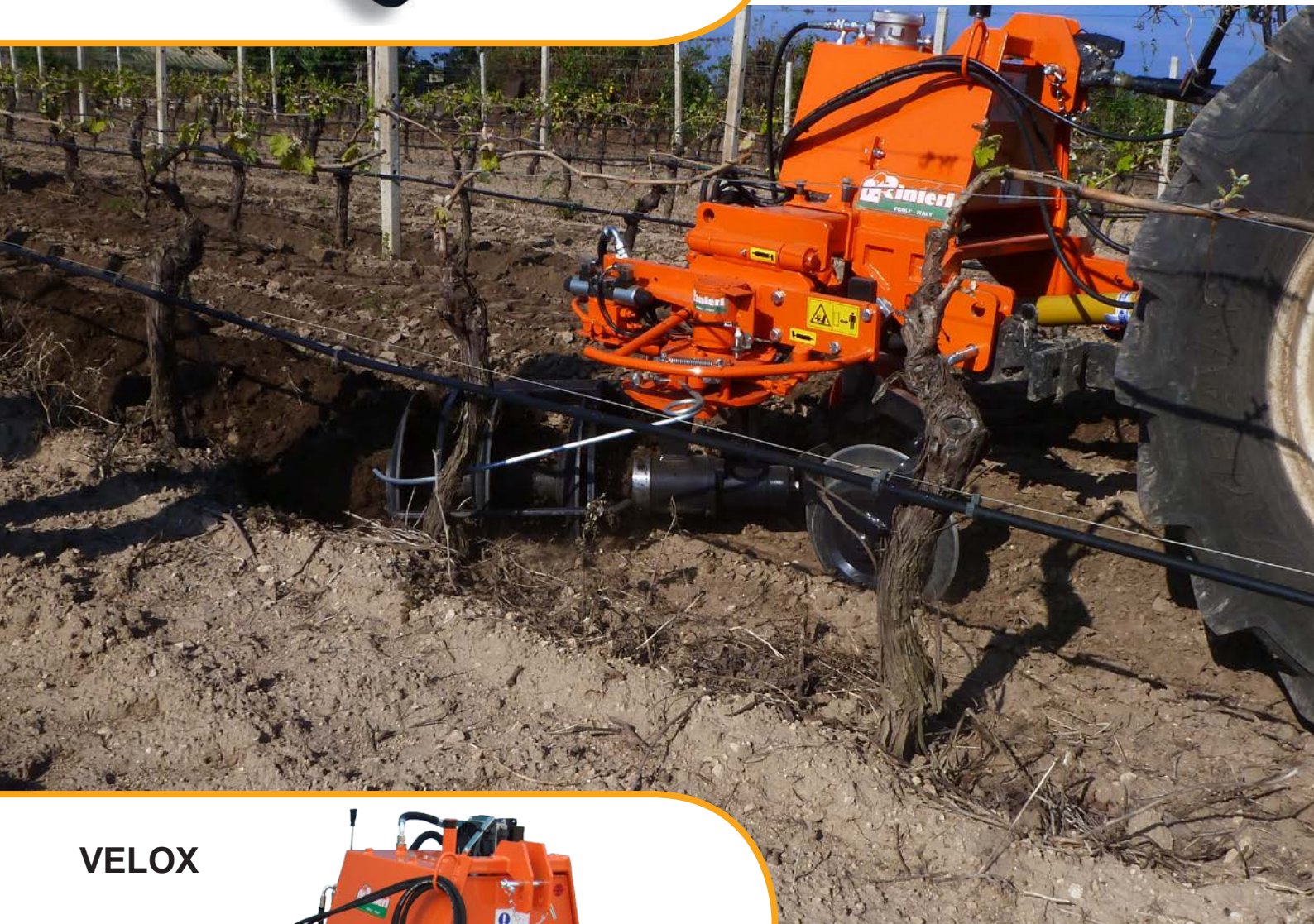


## Since 1920

 Gruppi scavallatori idraulici GS ed elettroidraulici GE montati su telai portati al sollevatore anteriore o posteriore. Sono disponibili diversi modelli di telaio semplici o doppi ed i gruppi scavallatori possono montare svariati utensili di lavoro.



 In row hydraulic group GS and electro hydraulic GE mounted on front or rear frame. Several models are available, simple or double side and the in-row groups can mount different working tools.


 Groupes décavallonneurs hydrauliques GS ou électrohydrauliques GE sur châssis montés au bras de relevage antérieur ou postérieur. Différents modèles de châssis simples ou doubles sont disponibles et les groupes décavallonneurs peuvent monter différents outils de travail.




# VELOX



MOD	 min cm (inch)	 max cm (inch)
VELOX 1/130	180 (71)	380 (150)
VELOX 2/130	300 (118)	500 (197)
VELOX 2/180	350 (138)	600 (236)
VELOX 8 S	180 (71)	220 (87)
VELOX 8 L	220 (87)	300 (118)

 Hydraulische Unterstockgruppe GS oder elektrohydraulische Unterstockgruppe GE an gehobenem Rahmen für Front- oder Heckanbau. Verfügbar sind verschiedene, ein- oder doppelseitige Rahmenmodelle und verschiedene Anbaugeräte, die an die Unterstockgruppen angebaut werden können.

 Grupos intercepas hidráulicos GS o electro-hidráulicos GE sobre bastidores montados al elevador anterior o posterior. Disponibles diferentes modelos de bastidores sencillos o dobles, además los grupos pueden montar diferentes herramientas de trabajo.

## VELOX 8



## VELOX 8



cm (inch)



kg (lbs)

100 (39) - 170 (67)

380 (830) - 450 (990)

150 (59) - 250 (98)

400 (880) - 480 (1055)

150 (59) - 300 (118)

420 (925) - 500 (1100)

90 (35) - 110 (43)

500 (1100) - 600 (1320)

110 (43) - 150 (59)

550 (1210) - 650 (1430)

Utensili di lavoro - Working tools - Outils de travail  
Arbeitsgeräte - Herramientas de trabajo



Viale dell'Appennino 606B  
47121 - Forlì (FC) - ITALY  
Tel. +39 0543 86066  
Fax +39 0543 83418

[info@rinieri.com](mailto:info@rinieri.com)

[www.rinieri.com](http://www.rinieri.com)